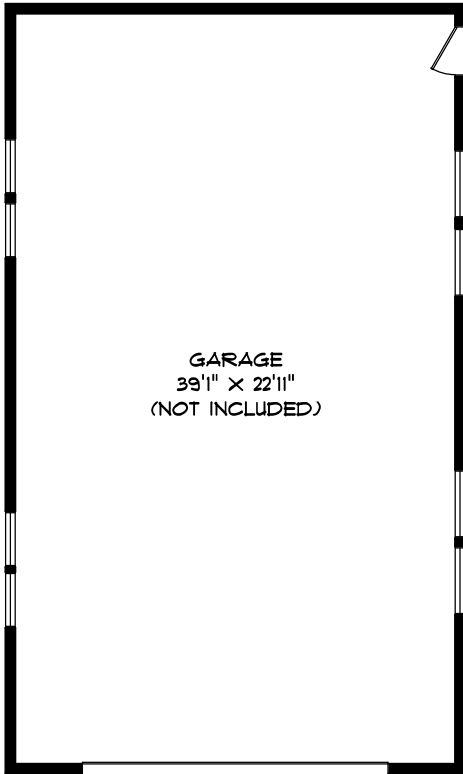


4612 206th STREET  
LANGLEY

TOTAL USABLE AREA 3097 SQ.FT.

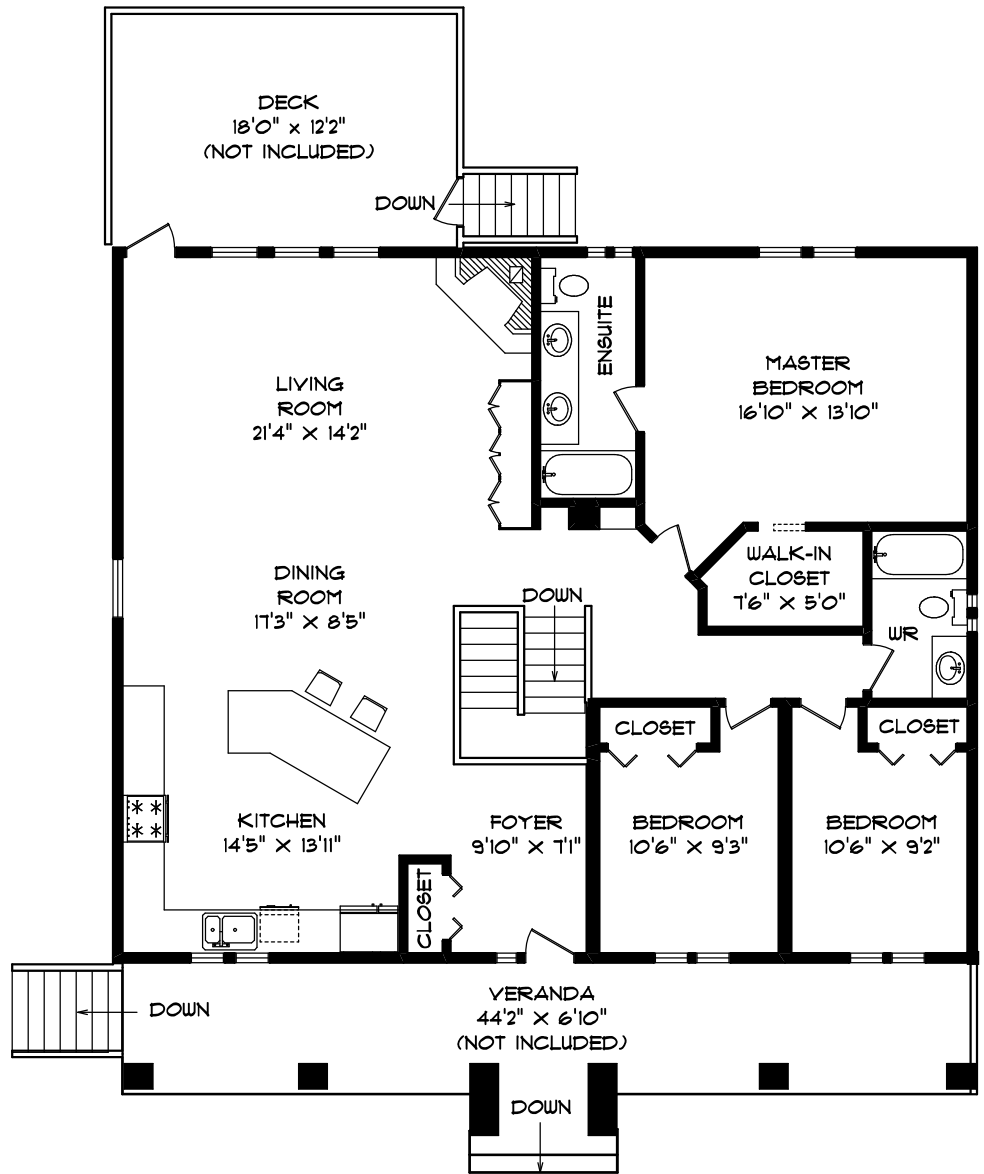
NOT INCLUDED 1621 SQ.FT.

LEO RONSE  
604-530-0231

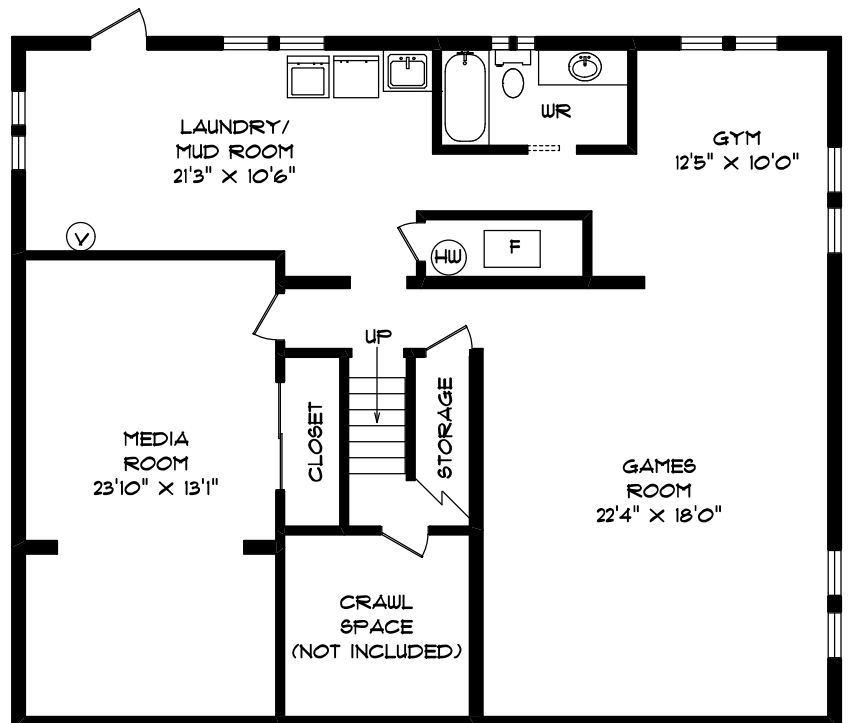


GARAGE  
39'1" x 22'11"  
(NOT INCLUDED)

GARAGE 959 SQ.FT.



MAIN LEVEL 1676 SQ.FT.



LOWER LEVEL 1421 SQ.FT.

Seevirtual360.com

- FLOOR PLANS - - - - - AUG 09 -

ROOM SIZES SHOULD BE CONSIDERED APPROXIMATE.  
MEASUREMENTS ARE FOR PROMOTIONAL USE ONLY  
AND ARE SUBJECT TO CERTIFICATION. E & O E.

604.575.1244