

2513 204th STREET
LANGLEY

TOTAL USABLE AREA 2667 SQ.FT.

NOT INCLUDED 1878 SQ.FT.

Seevirtual360.com

- FLOOR PLANS - - - - - SEPT 09 -

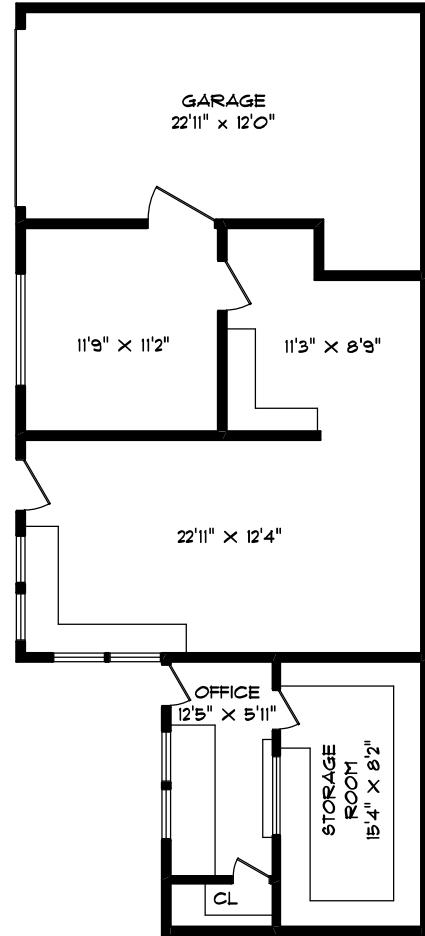
ROOM SIZES SHOULD BE CONSIDERED APPROXIMATE.
MEASUREMENTS ARE FOR PROMOTIONAL USE ONLY
AND ARE SUBJECT TO CERTIFICATION, E & O. E.

604.575.1244

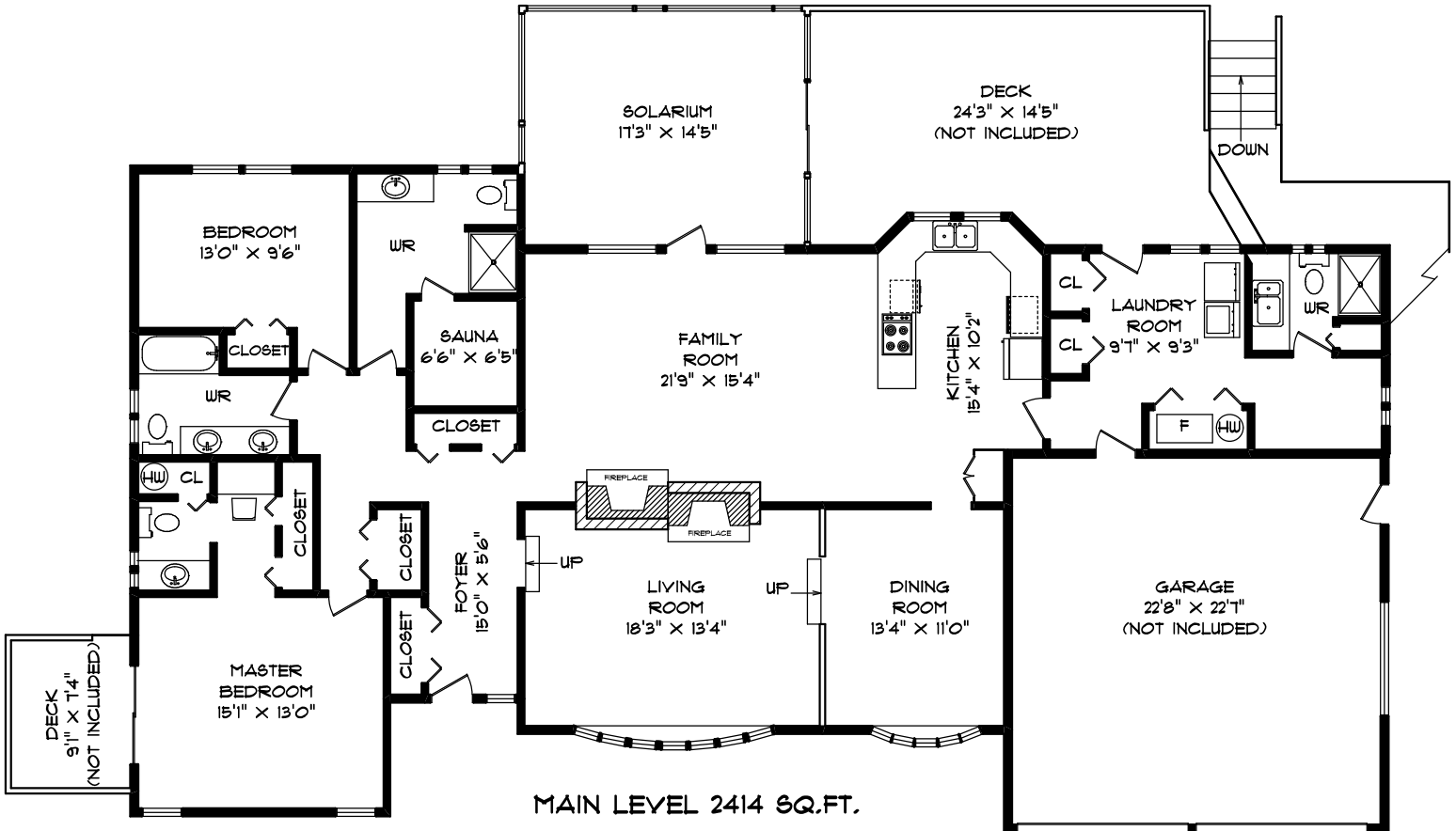
ANDY SCHILDHORN

778-835-8957

GARAGE/WORKSHOP 911 SQ.FT.
(NOT INCLUDED)



OFFICE 253 SQ.FT.



MAIN LEVEL 2414 SQ.FT.