

2812 Dollarton Highway,
North Vancouver, BC

TOTAL FINISHED AREA: 3866 SQ.FT.

OTHER AREA(S)	
GARAGE:	397 SQ.FT.
FRONT DECK:	136 SQ.FT.*
BACK COVERED DECK:	120 SQ.FT.*



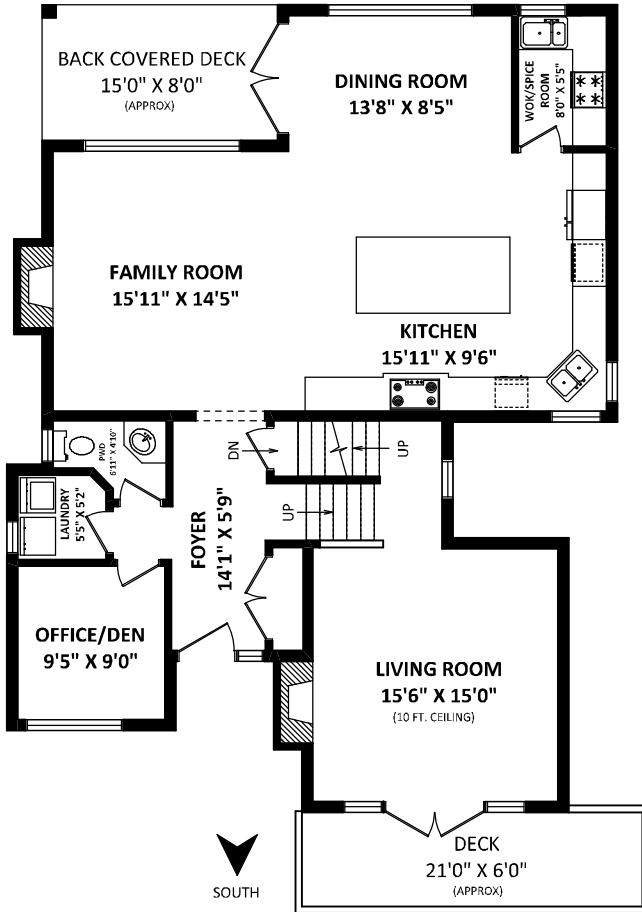
PHIL LeGREE

RE/MAX Masters Realty

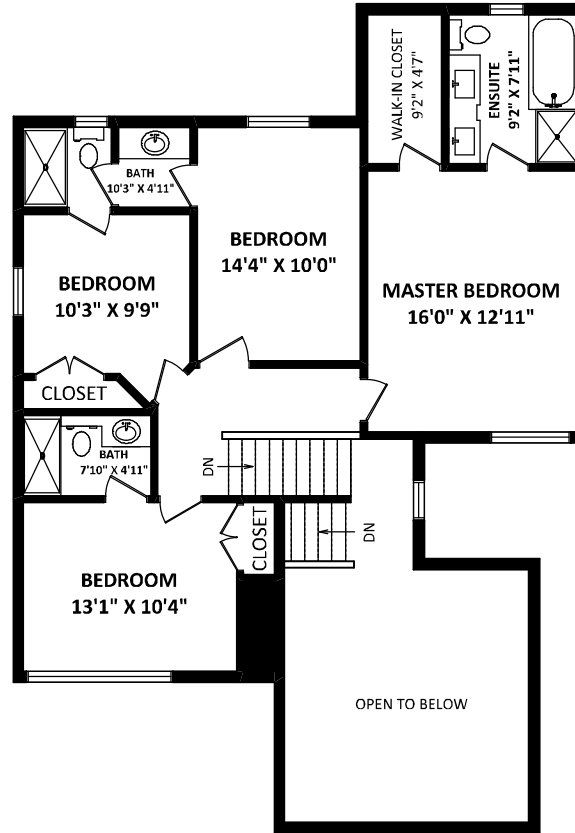
Cell: (604) 518 - 1644

plegree@gmail.com

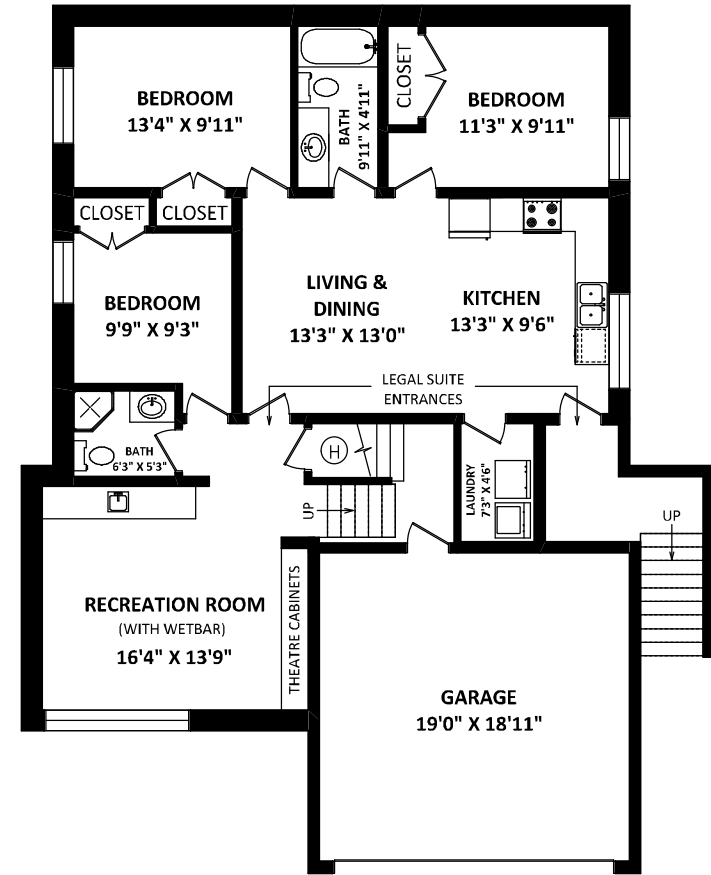
www.phillegree.com



MAIN FLOOR: 1435 SQ.FT.



UPPER FLOOR: 1078 SQ.FT.



LOWER FLOOR: 1353 SQ.FT.

LEGAL SUITE: 796 SQ.FT.

GENERAL NOTES:
1. MEASUREMENTS ARE FOR PROMOTIONAL USE ONLY & ARE NOT INTENDED FOR CONSTRUCTION USE. ROOM DIMENSIONS ARE APPROXIMATE. MEASUREMENTS & CALCULATIONS FOR FINISHED AREAS ARE E&O INSURED.
2. FINISHED AREAS ARE ENCLOSED AREAS IN A HOUSE THAT ARE SUITABLE FOR YEAR-ROUND USE, EMBODYING WALLS, FLOORS, AND CEILINGS THAT ARE SIMILAR TO THE REST OF THE HOUSE. (ANSI Z765-2003)
3. THIS FLOOR PLAN MAY ONLY BE REPRODUCED WITH PERMISSION OF THE REALTOR(S) ON THIS FLOOR PLAN.
* ANY MEASUREMENT WITH AN ASTERISK (*) OR [APPROX] ARE APPROXIMATE AND FOR ILLUSTRATION PURPOSES ONLY AND ARE NOT E&O INSURED.

