



**MIKE GRAHAME & TYSON ANGUS**  
 Personal Real Estate Corporation  
**Homelife Benchmark Realty Corp.**  
 604.531.1111 sold@mikegrahame.com



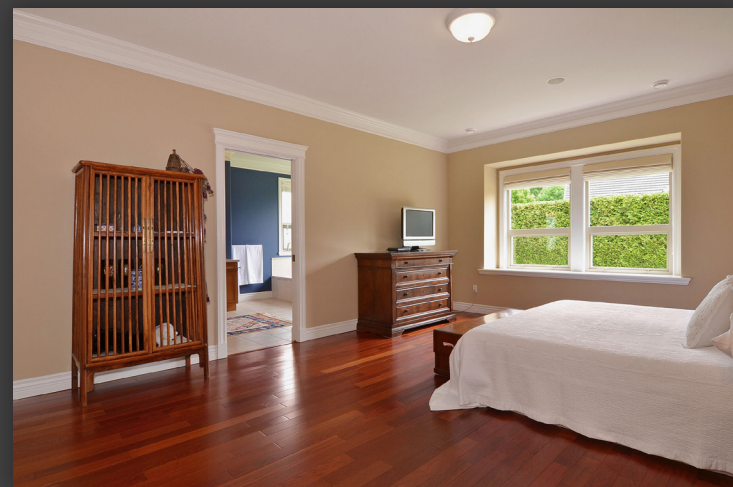
# 2100 139A St, Surrey



This version of the floorplan is for marketing purposes only. Please contact Mike Grahame for specifications.







## 2100 139A St, Surrey

CHANTREL PARK ESTATES Welcome to this custom built one owner home. Over 6000 sq.ft. on 3 spacious levels. Private master retreat on main with large ensuite & walk in closet. Traditional cross hall living room/dining room. Office area, grand gourmet kitchen with large island & separate spice/wok kitchen. Open eating area & family room overlooking the rear yard. Hardwood floors & plenty of mill work in this bright open plan. Upper level has 3 good sized bedroom one with ensuite & the other have joining bath. The lower level has an office, games & media area along with a library, exercise room, wine room & workshop. Beautiful curb appeal on just under 14,000 sq.ft. of well-manicured grounds with a large 3 car garage, storage shed covered patio/BBQ area & plenty of grass for entertaining.

Lot	13982 ft <sup>2</sup>
Frontage	8198 ft <sup>2</sup>
Tax	\$7455.24
Age	12 years
Style	3 Storey
Bedrooms	4
Bathrooms	5
Size	6159 ft <sup>2</sup>

For more photos and a virtual tour, please visit: [www.mikegrahame.com](http://www.mikegrahame.com)



604-531-1111  
 Homelife Benchmark Realty Corp.  
 #1 1920 152 St, White Rock, BC V4A 4N6