



53 - 245 Francis Way,
New Westminster, BC

TOTAL USABLE AREA: 1693 SQ. FT.

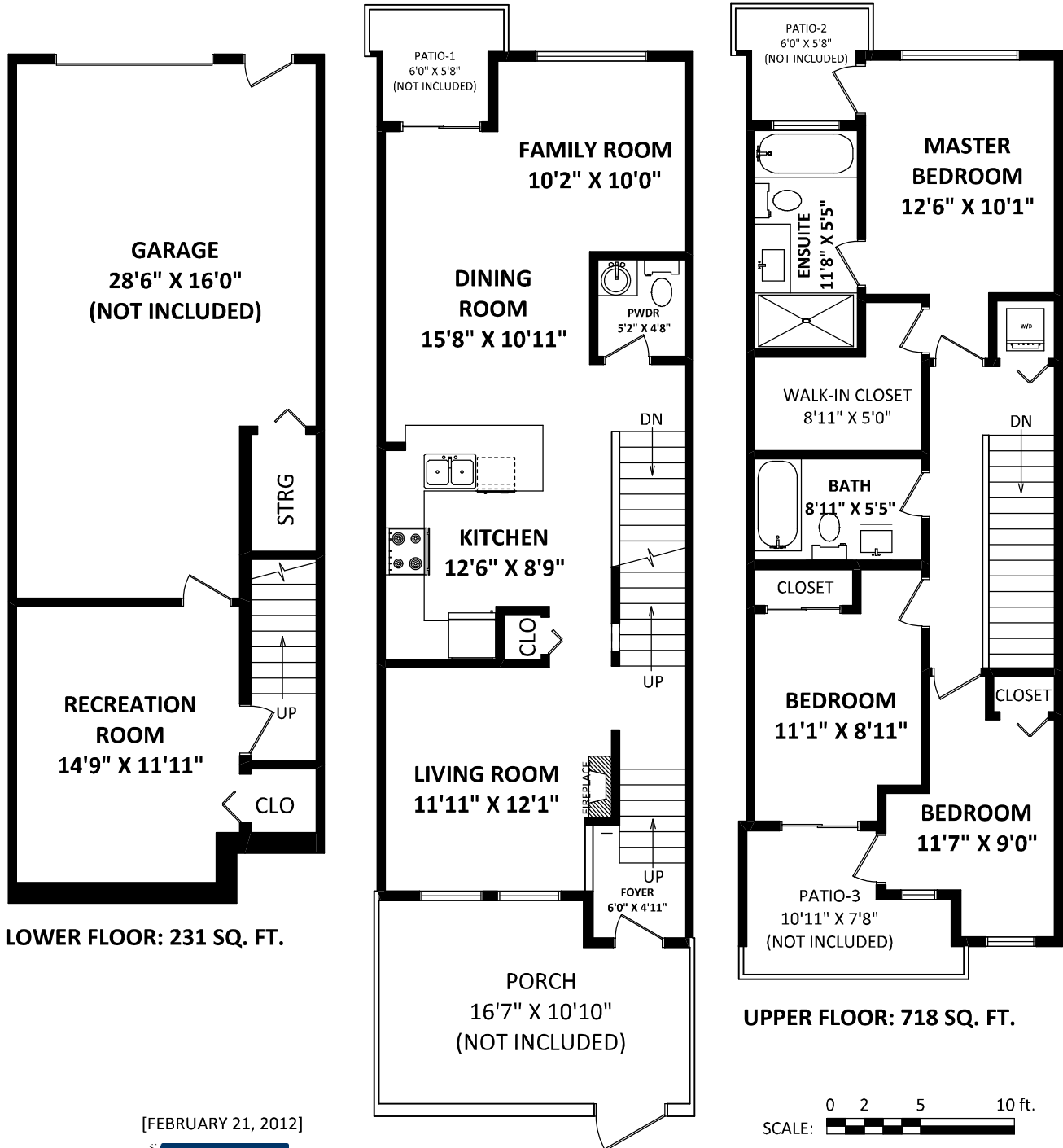
ERIC & JULIANA VALLEE

Keller Williams Elite Realty

Cell-Eric: (604) 788-5133 Cell-Juliana: (778) 822-8000
 eric@valleerealestate.ca juliana@valleerealestate.ca
 www.valleerealestate.ca

NOT INCLUDED AREAS

GARAGE:	504 SQ. FT.
PORCH:	174 SQ. FT.
PATIO-1:	40 SQ. FT.
PATIO-2:	40 SQ. FT.
PATIO-3:	74 SQ. FT.



[FEBRUARY 21, 2012]



MAIN FLOOR: 744 SQ. FT.



MEASUREMENTS ARE FOR PROMOTIONAL USE ONLY AND IS NOT INTENDED FOR CONSTRUCTION USE. ROOM SIZES SHOULD BE CONSIDERED APPROXIMATE. MEASUREMENTS & CALCULATIONS ARE E&O INSURED.