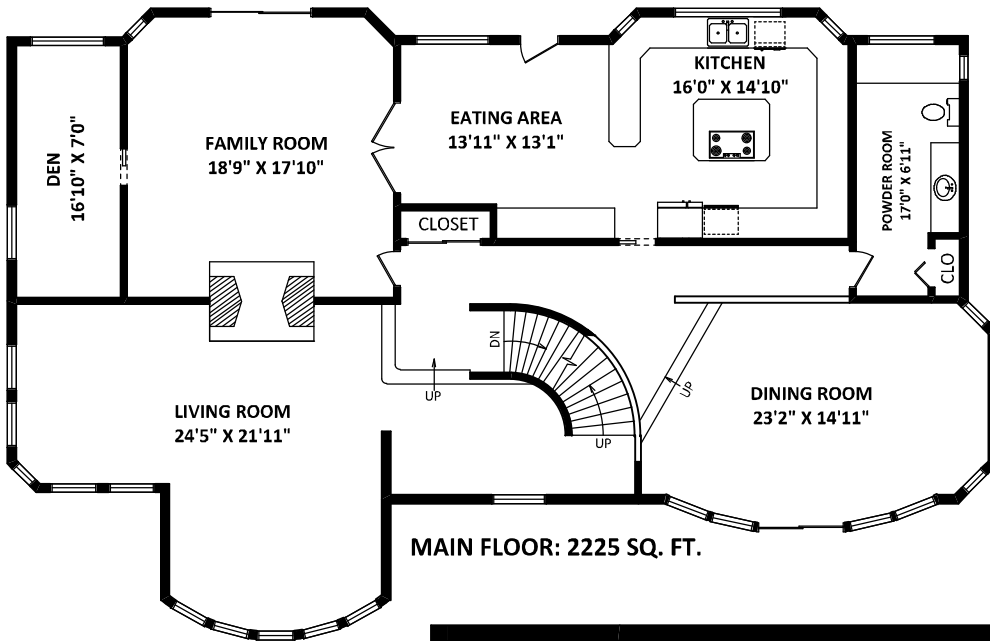
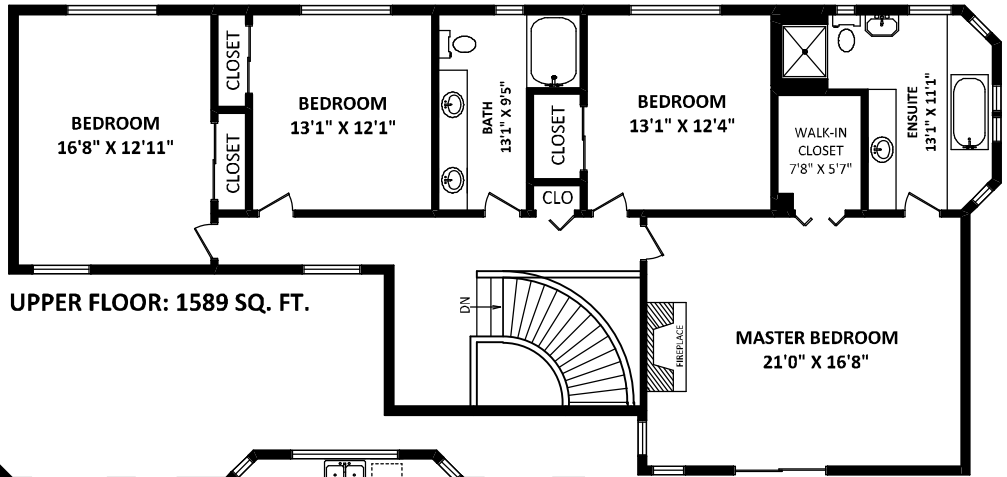


2611 Charter Hill Place,
Coquitlam, BC



ERIC & JULIANA VALLEE

Keller Williams Elite Realty
Cell-Eric: (604) 788-5133
Cell-Juliana: (778) 822-8000
eric@valleerealestate.ca
juliana@valleerealestate.ca
www.valleerealestate.ca



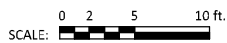
TOTAL USABLE AREA: 5057 SQ. FT.

NOT INCLUDED AREAS

FLEX ROOM (ABOVE GARAGE): 206 SQ. FT.
OFFICE (CEILING HT=5'9"): 670 SQ. FT.



[MAY 25, 2012]



MEASUREMENTS ARE FOR PROMOTIONAL USE ONLY AND IS NOT INTENDED FOR CONSTRUCTION USE. ROOM SIZES SHOULD BE CONSIDERED APPROXIMATE. MEASUREMENTS & CALCULATIONS ARE E&O INSURED.

