



Park Georgia Realty Ltd.
Coquitlam
 Cell: 778-838-7069
 Office: 604-421-7275
 info@ippolita.ca
 www.ippolita.ca

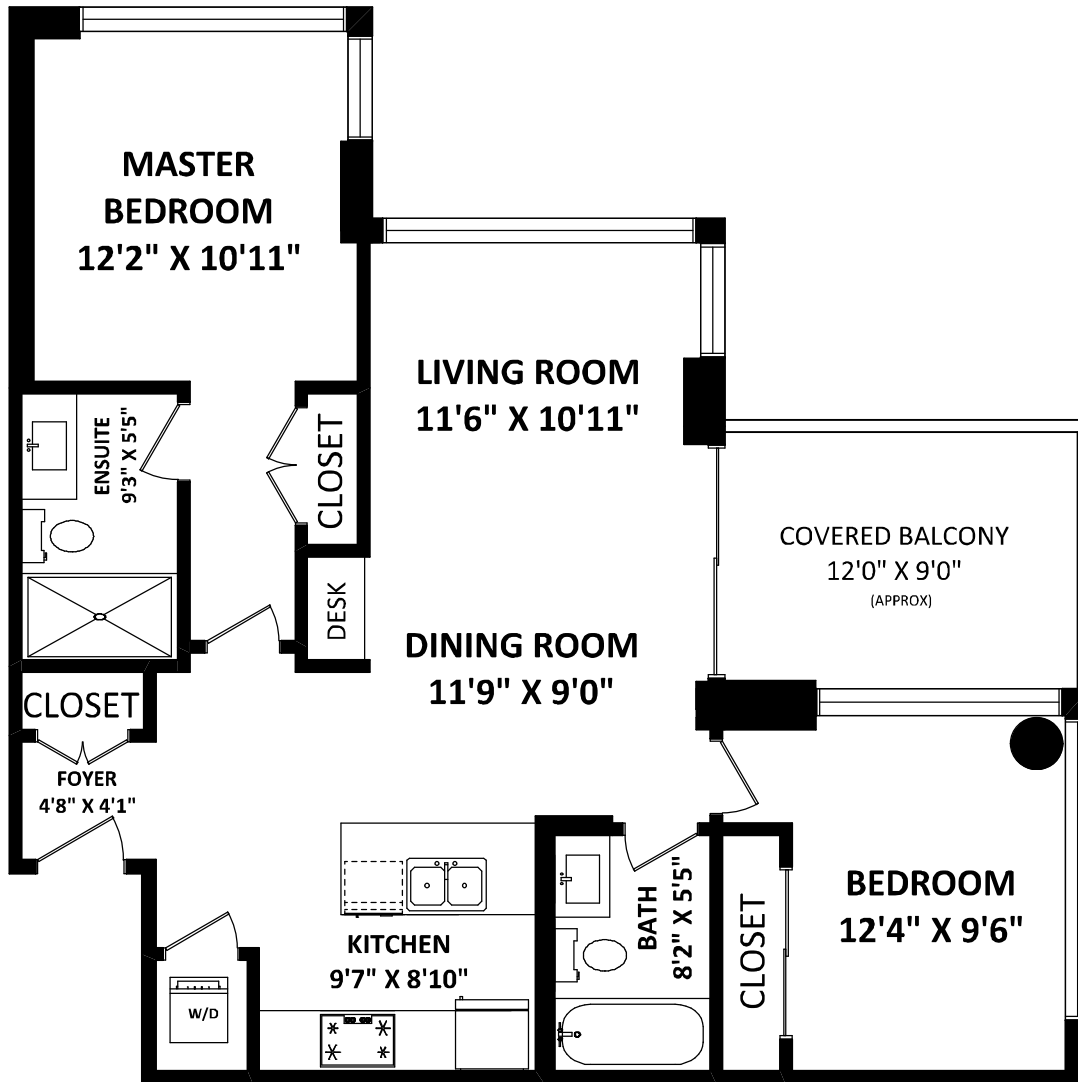
#703 608 Belmont Street,
New Westminster, BC

TOTAL FINISHED AREA: 945 SQ.FT.

OTHER AREA(S)

COVERED BALCONY:

114 SQ.FT.*



FLOOR PLAN BY:

[OCTOBER 4, 2017]



TEL: 604-575-1244

www.seevirtual360.com

GENERAL NOTES:

1. MEASUREMENTS ARE FOR PROMOTIONAL USE ONLY & ARE NOT INTENDED FOR CONSTRUCTION USE. ROOM DIMENSIONS ARE APPROXIMATE. MEASUREMENTS & CALCULATIONS FOR FINISHED AREAS ARE E&O INSURED.
 2. FINISHED AREAS ARE ENCLOSED AREAS IN A HOUSE THAT ARE SUITABLE FOR YEAR-ROUND USE, EMBODYING WALLS, FLOORS, AND CEILINGS THAT ARE SIMILAR TO THE REST OF THE HOUSE. (ANSI Z765-2003)
 3. THIS FLOOR PLAN MAY ONLY BE REPRODUCED WITH PERMISSION OF THE REALTOR(S) ON THIS FLOOR PLAN.
- * ANY MEASUREMENT WITH AN ASTERISK (*) OR (APPROX) ARE APPROXIMATE AND FOR ILLUSTRATION PURPOSES ONLY AND ARE NOT E&O INSURED.

