

**41730 Woodridge Place,**  
Chilliwack, BC



**JOHN CORRIE**

**RE/MAX Little Oak Realty**

Phone: 604-859-2341

Cell: 604-309-0540

john@johncorrie.com

www.johncorrie.com



**TOTAL FINISHED AREA: 3730 SQ.FT.**

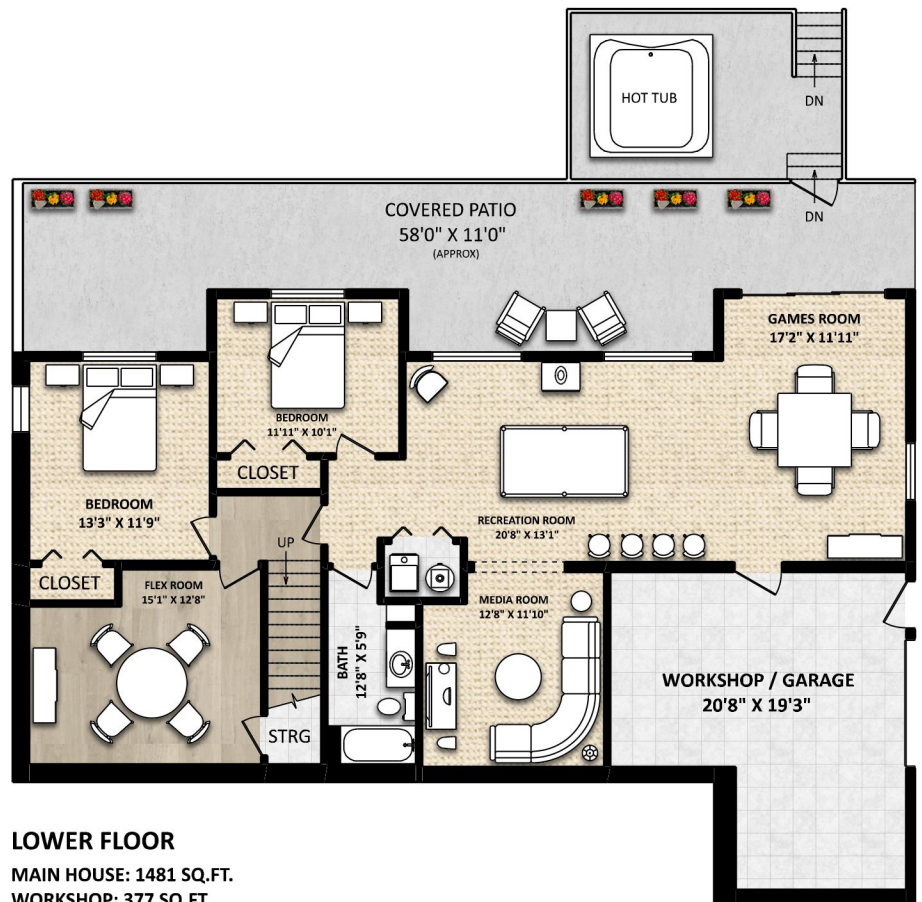
**MAIN HOUSE: 3353 SQ.FT.**

**WORKSHOP / GARAGE: 377 SQ.FT.**

**OTHER AREA(S)**

GARAGE:	658 SQ.FT.
DECK:	676 SQ.FT.*
PORCH:	203 SQ.FT.*
COVERED PATIO:	554 SQ.FT.*
SUNROOM:	100 SQ.FT.*

**MAIN FLOOR: 1872 SQ.FT.**



**LOWER FLOOR**

**MAIN HOUSE: 1481 SQ.FT.**

**WORKSHOP: 377 SQ.FT.**

FLOOR PLAN BY:  
[APRIL 3, 2019]  
**SEEVIRTUAL**  
TEL: 604-575-1244  
www.seevirtual360.com



**DISCLAIMER:**  
1. MEASUREMENTS ARE FOR PROMOTIONAL USE ONLY & ARE NOT INTENDED FOR CONSTRUCTION USE. ROOM DIMENSIONS ARE APPROXIMATE. MEASUREMENTS & CALCULATIONS FOR FINISHED AREAS ARE E&O INSURED.  
2. FINISHED AREAS ARE ENCLOSED AREAS IN A HOUSE THAT ARE SUITABLE FOR YEAR-ROUND USE, EMBODYING WALLS, FLOORS, AND CEILINGS THAT ARE SIMILAR TO THE REST OF THE HOUSE. (ANSI Z765-2013)  
3. THIS FLOOR PLAN MAY ONLY BE REPRODUCED WITH PERMISSION OF THE REALTOR(S) ON THIS FLOOR PLAN.  
\* ANY MEASUREMENT WITH AN ASTERISK (\*) OR (APPROX) ARE APPROXIMATE AND FOR ILLUSTRATION PURPOSES ONLY AND ARE NOT E&O INSURED.

