

**712 5th Street,  
New Westminster, BC**

**IPPOLITA CORCIONE**

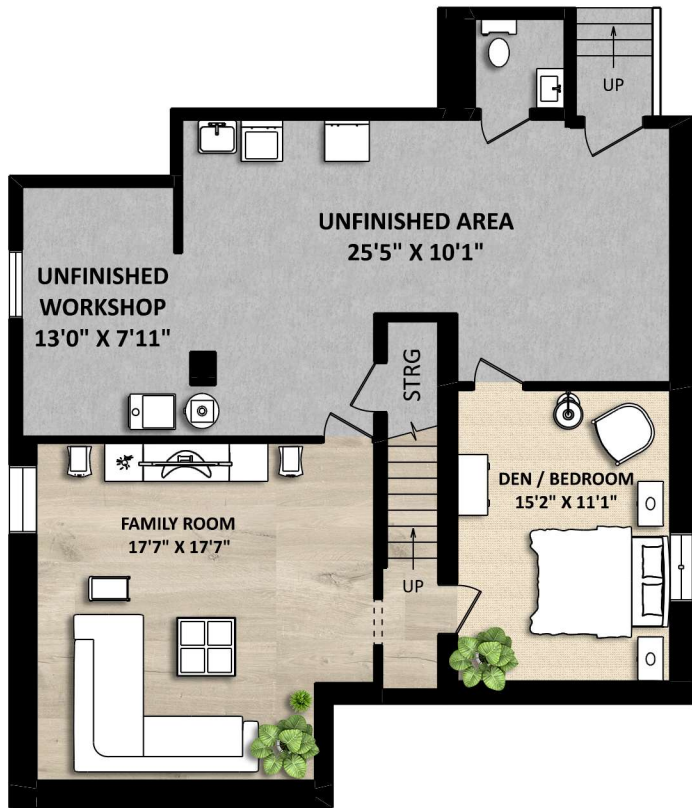
Cell: 778-838-7069  
Office: 604-421-7275  
info@ippolita.ca  
www.ippolita.ca



**TOTAL FINISHED AREA: 2319 SQ.FT.**

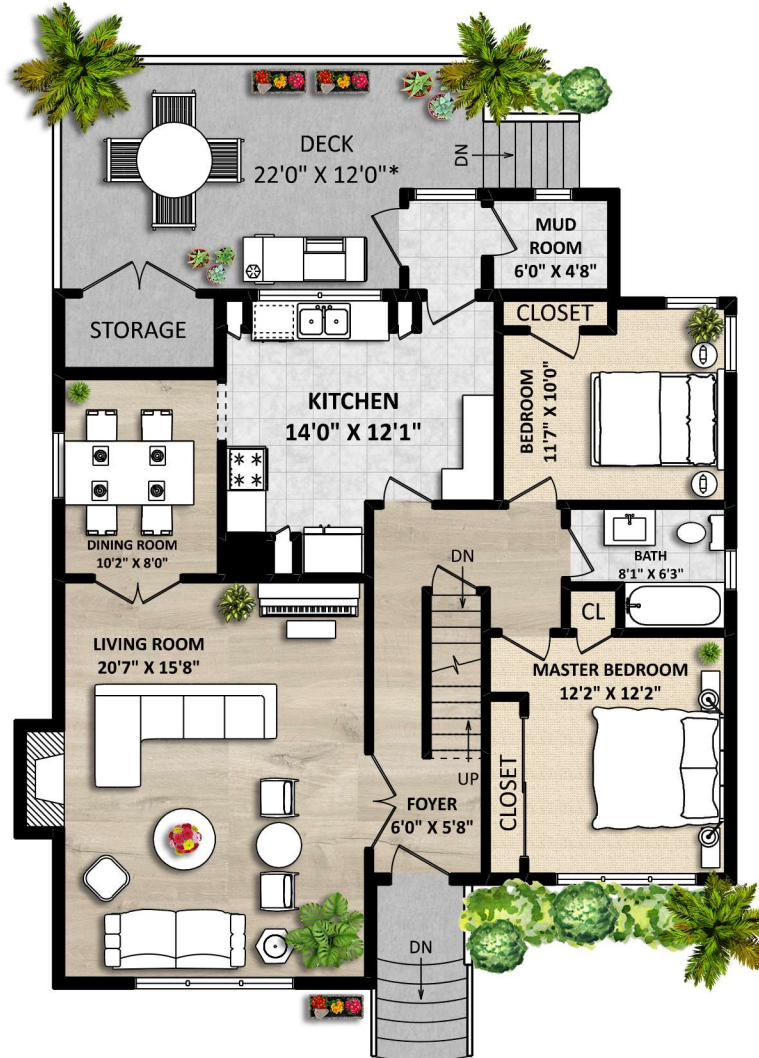
*OTHER AREA(S)*

UNFINISHED AREA(S): 576 SQ.FT.  
MUD ROOM & BACK ENTRY: 60 SQ.FT.  
DECK: 253 SQ.FT.\*  
STORAGE: 34 SQ.FT.\*



**LOWER FLOOR:**

FINISHED AREA: 624 SQ.FT.  
UNFINISHED AREA(S): 576 SQ.FT.  
CEILING HEIGHT: 6'5"



**MAIN FLOOR: 1160 SQ.FT.**



**UPPER FLOOR: 535 SQ.FT.**

**DISCLAIMER:**

1. MEASUREMENTS ARE FOR PROMOTIONAL USE ONLY & ARE NOT INTENDED FOR CONSTRUCTION USE. ROOM DIMENSIONS ARE APPROXIMATE. MEASUREMENTS & CALCULATIONS FOR FINISHED AREAS ARE E&O INSURED.  
2. FINISHED AREAS ARE ENCLOSED AREAS IN A HOUSE THAT ARE SUITABLE FOR YEAR-ROUND USE, EMBODYING WALLS, FLOORS, AND CEILINGS THAT ARE SIMILAR TO THE REST OF THE HOUSE. (ANSI Z765-2013)  
3. THIS FLOOR PLAN MAY ONLY BE REPRODUCED WITH PERMISSION OF THE REALTOR(S) ON THIS FLOOR PLAN.  
\* ANY MEASUREMENT WITH AN ASTERISK (\*) OR (APPROX) ARE APPROXIMATE AND FOR ILLUSTRATION PURPOSES ONLY AND ARE NOT E&O INSURED.

SCALE: 0 2 5 10 FT



FLOOR PLAN BY:

[MARCH 26, 2020]



TEL: 604-575-1244

www.seevirtual360.com