

#35 1108 Riverside Close,
Port Coquitlam, BC

ALAN M. AU

Sutton Group West Coast Realty
West Broadway

Cell: 604-828-6021
 Office: 604-714-1700
 alanau@shaw.ca

BO PARK

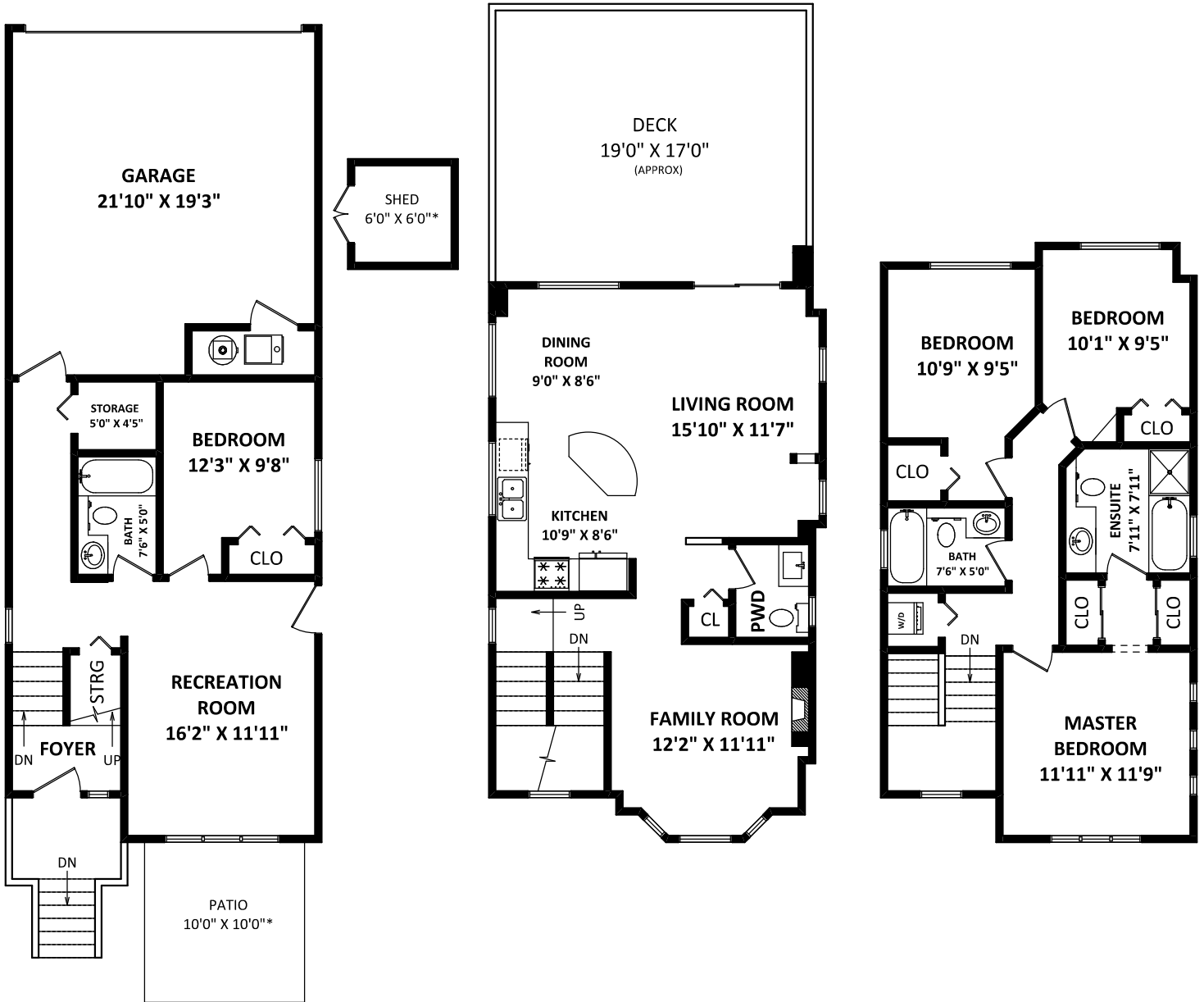
Sutton Group Westcoast Realty
West Broadway

Cell: 604-377-7899
 Office: 604-714-1700
 bo@bopark.ca
 www.bopark.ca

TOTAL FINISHED AREA: 1954 SQ.FT.

OTHER AREA(S)

GARAGE & UTILITY:	434 SQ.FT.
DECK:	350 SQ.FT.*
PATIO:	100 SQ.FT.*
SHED:	50 SQ.FT.*



LOWER FLOOR: 559 SQ.FT.

MAIN FLOOR: 689 SQ.FT.

UPPER FLOOR: 706 SQ.FT.