

**518 Fourth Street
New Westminster, BC**

TOTAL FINISHED AREA: 2069 SQ.FT.

OTHER AREA(S)

GARAGE:	337 SQ.FT.
DECK:	101 SQ.FT.*
PATIO (L):	197 SQ.FT.*
PATIO (S):	93 SQ.FT.*
COLD STORAGE:	67 SQ.FT.*



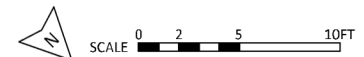
LOWER FLOOR: 817 SQ.FT.

CEILING HEIGHT: 8'



MAIN FLOOR: 1252 SQ.FT.

CEILING HEIGHT: 8'



[JUNE 26, 2023]



TEL: 604-575-1244
www.seevirtual360.com

DISCLAIMERS:
 1. MEASUREMENTS ARE FOR PROMOTIONAL USE ONLY & ARE NOT INTENDED FOR CONSTRUCTION USE. ROOM DIMENSIONS ARE APPROXIMATE. MEASUREMENTS & CALCULATIONS FOR FINISHED AREAS ARE E&O INSURED.
 2. FINISHED AREAS ARE ENCLOSED AREAS IN A HOUSE THAT ARE SUITABLE FOR YEAR-ROUND USE, EMBODYING WALLS, FLOORS, AND CEILINGS THAT ARE SIMILAR TO THE REST OF THE HOUSE. (ANSI Z765-2013)
 3. FOR DETACHED SINGLE-FAMILY HOUSES, THE FINISHED SQUARE FOOTAGE OF EACH LEVEL IS CALCULATED TO THE EXTERIOR FINISHED SURFACE OF THE OUTSIDE WALLS. (ANSI Z765-2013)
 4. THIS FLOOR PLAN MAY ONLY BE REPRODUCED WITH PERMISSION OF THE REALTOR(S) ON THIS FLOOR PLAN.
 * ANY MEASUREMENTS WITH AN ASTERISK (*) ARE APPROXIMATE AND FOR ILLUSTRATION PURPOSES ONLY AND ARE NOT E&O INSURED.